



ETURNA

BEACH VILLAS & RESIDENCES

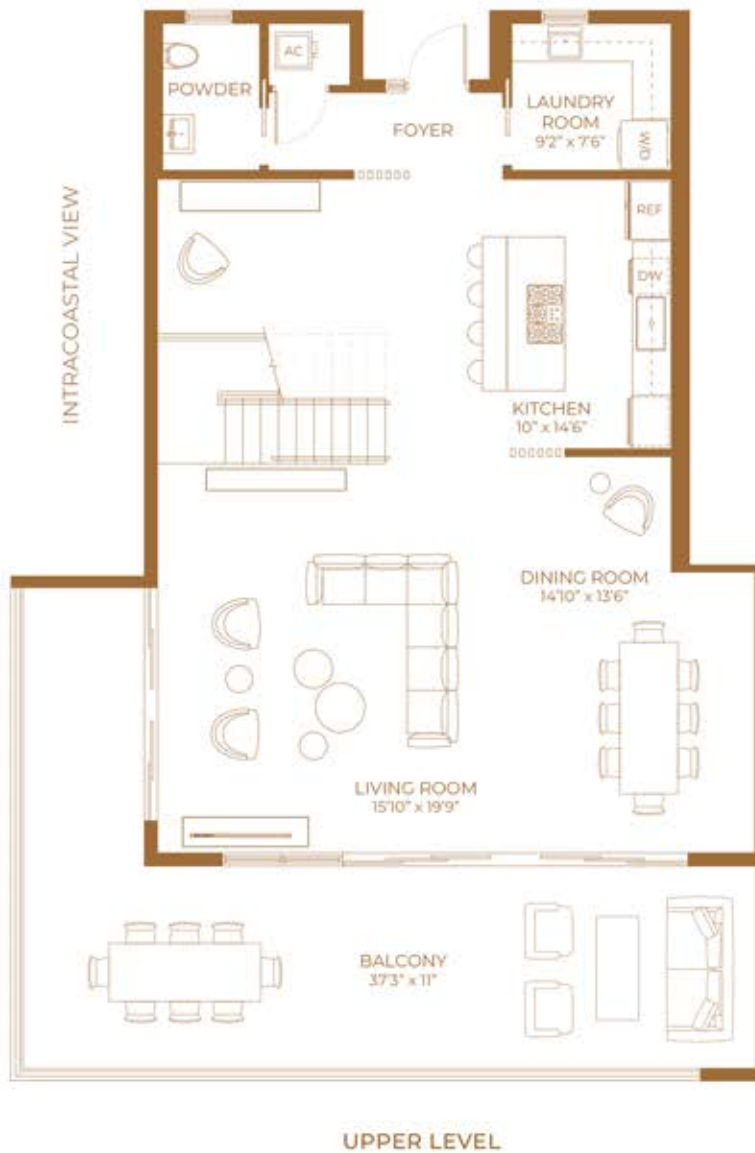
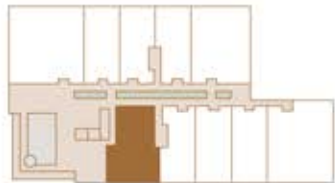
3319 North Ocean Drive
Hollywood, Florida 33019

BEACH VILLA 1

3 Bedroom
2.5 Bathroom

INTERIOR
2,543 Sq Ft
236 Sq M

EXTERIOR
1,721 Sq Ft
160 Sq M



© Stated dimensions are measured to the exterior boundaries of the exterior walls and the centerline of interior demising walls and in fact vary from the dimensions that would be determined by using the description and definition of the "Unit" set forth in the Declaration (which generally only includes the interior airspace between the perimeter walls and excludes interior structural components). For your reference, the area of the Unit, determined in accordance with those defined unit boundaries, is 2,543 square footage. Note that measurements of rooms set forth on this floor plan are generally taken at the greatest points of each given room (as if the room were a perfect rectangle), without regard for any cutouts. Accordingly, the area of the actual room will typically be smaller than the product obtained by multiplying the stated length times width. All dimensions are approximate and may vary with actual construction, and all floor plans and development plans are subject to change.



ETURNA

BEACH VILLAS & RESIDENCES

3319 North Ocean Drive
Hollywood, Florida 33019

BEACH VILLA 3

3 Bedroom
2.5 Bathroom

INTERIOR
2,203 Sq Ft
205 Sq M

EXTERIOR
404 Sq Ft
38 Sq M



INTRACOASTAL VIEW



LOWER LEVEL

OCEAN VIEW



UPPER LEVEL



⚠ Stated dimensions are measured to the exterior boundaries of the exterior walls and the centerline of interior demising walls and in fact vary from the dimensions that would be determined by using the description and definition of the "Unit" set forth in the Declaration (which generally only includes the interior airspace between the perimeter walls and excludes interior structural components). For your reference, the area of the Unit, determined in accordance with those defined unit boundaries, is 2,203 square footage. Note that measurements of rooms set forth on this floor plan are generally taken at the greatest points of each given room (as if the room were a perfect rectangle), without regard for any cutouts. Accordingly, the area of the actual room will typically be smaller than the product obtained by multiplying the stated length times width. All dimensions are approximate and may vary with actual construction, and all floor plans and development plans are subject to change.



ETURNA

BEACH VILLAS & RESIDENCES

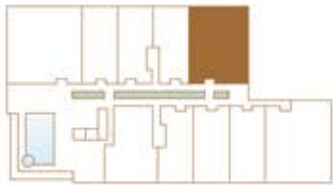
3319 North Ocean Drive
Hollywood, Florida 33019

BEACH VILLA 6

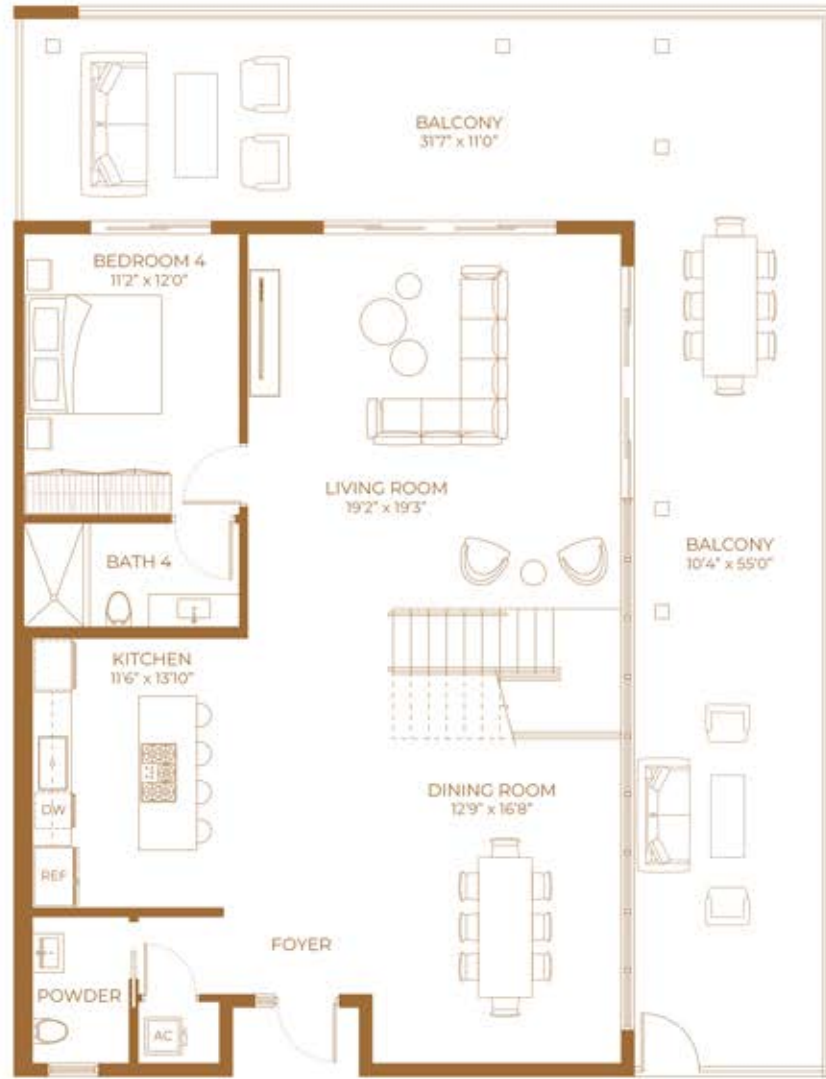
4 Bedroom
4.5 Bathroom

INTERIOR
2,759 Sq Ft
256 Sq M

EXTERIOR
1,057 Sq Ft
98 Sq M

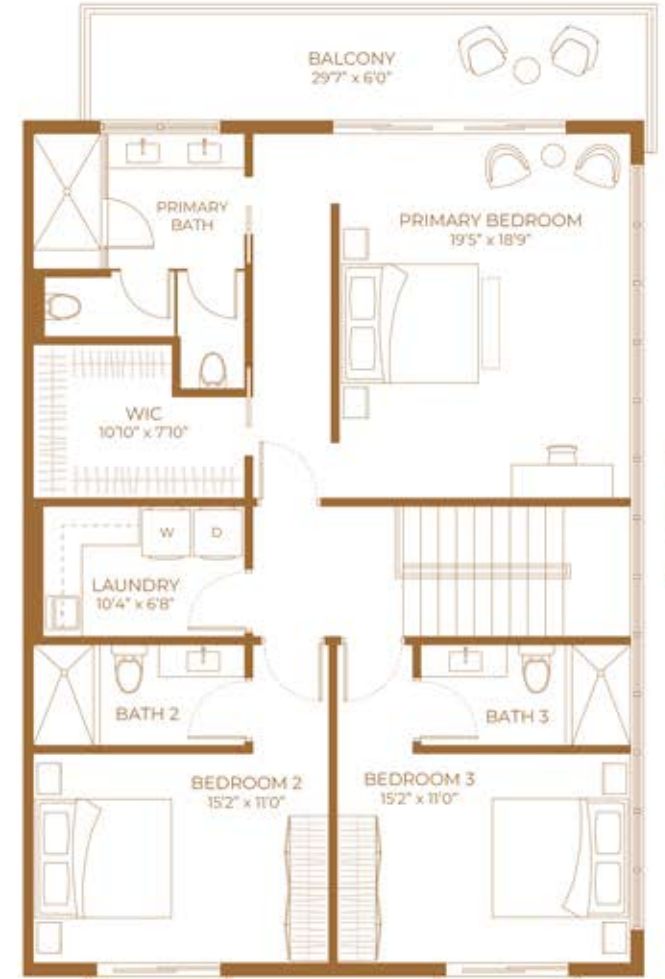


INTRACOASTAL VIEW



LOWER LEVEL

OCEAN VIEW



UPPER LEVEL



© Stated dimensions are measured to the exterior boundaries of the exterior walls and the centerline of interior demising walls and in fact vary from the dimensions that would be determined by using the description and definition of the "Unit" set forth in the Declaration (which generally only includes the interior airspace between the perimeter walls and excludes interior structural components). For your reference, the area of the Unit, determined in accordance with those defined unit boundaries, is 2,759 square footage. Note that measurements of rooms set forth on this floor plan are generally taken at the greatest points of each given room (as if the room were a perfect rectangle), without regard for any cutouts. Accordingly, the area of the actual room will typically be smaller than the product obtained by multiplying the stated length times width. All dimensions are approximate and may vary with actual construction, and all floor plans and development plans are subject to change.



ETURNA

BEACH VILLAS & RESIDENCES

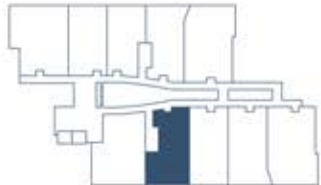
3319 North Ocean Drive
Hollywood, Florida 33019

501

1 Bedroom
1.5 Bathroom

INTERIOR
1,033 Sq Ft
315 Sq M

EXTERIOR
202 Sq Ft
62 Sq M



INTRACOASTAL VIEW



OCEAN VIEW



© Stated dimensions are measured to the exterior boundaries of the exterior walls and the centerline of interior demising walls and in fact vary from the dimensions that would be determined by using the description and definition of the "Unit" set forth in the Declaration (which generally only includes the interior airspace between the perimeter walls and excludes interior structural components). For your reference, the area of the Unit, determined in accordance with those defined unit boundaries, is 2,543 square footage. Note that measurements of rooms set forth on this floor plan are generally taken at the greatest points of each given room (as if the room were a perfect rectangle), without regard for any cutouts. Accordingly, the area of the actual room will typically be smaller than the product obtained by multiplying the stated length times width. All dimensions are approximate and may vary with actual construction, and all floor plans and development plans are subject to change.



ETURNA

BEACH VILLAS & RESIDENCES

3319 North Ocean Drive
Hollywood, Florida 33019

502

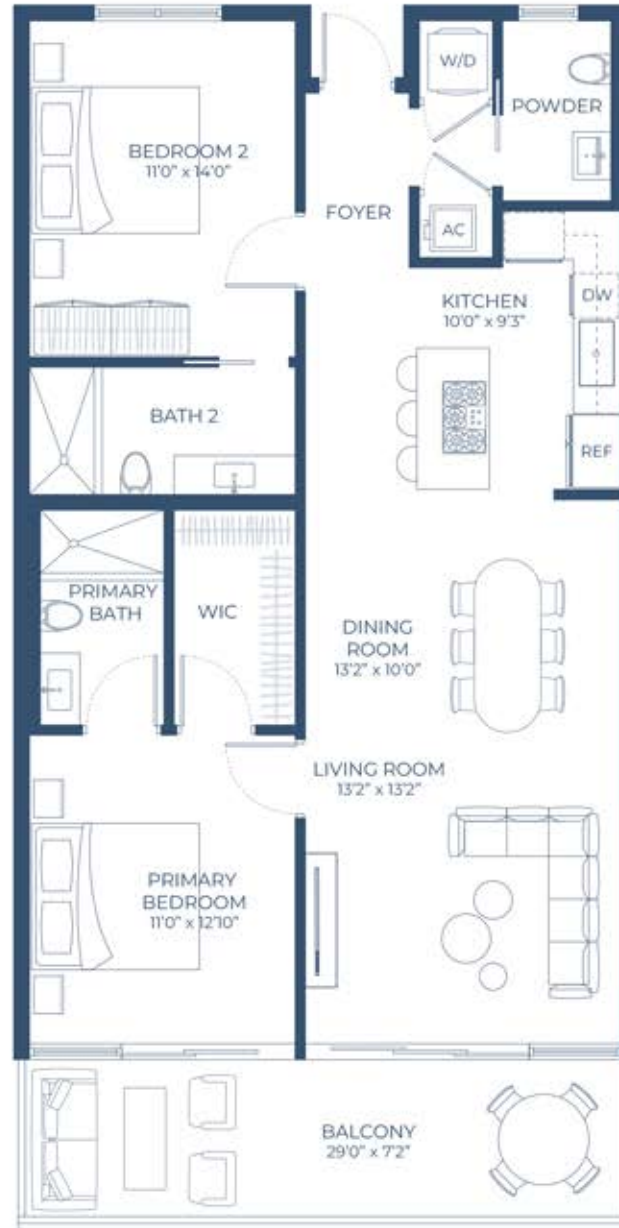
2 Bedroom
2.5 Bathroom

INTERIOR
1,102 Sq Ft
336 Sq M

EXTERIOR
178 Sq Ft
54 Sq M



INTRACOASTAL VIEW



OCEAN VIEW



© Stated dimensions are measured to the exterior boundaries of the exterior walls and the centerline of interior demising walls and in fact vary from the dimensions that would be determined by using the description and definition of the "Unit" set forth in the Declaration (which generally only includes the interior airspace between the perimeter walls and excludes interior structural components). For your reference, the area of the Unit, determined in accordance with those defined unit boundaries, is 2,543 square footage. Note that measurements of rooms set forth on this floor plan are generally taken at the greatest points of each given room (as if the room were a perfect rectangle), without regard for any cutouts. Accordingly, the area of the actual room will typically be smaller than the product obtained by multiplying the stated length times width. All dimensions are approximate and may vary with actual construction, and all floor plans and development plans are subject to change.



ETURNA

BEACH VILLAS & RESIDENCES

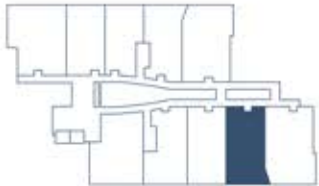
3319 North Ocean Drive
Hollywood, Florida 33019

503

2 Bedroom
2.5 Bathroom

INTERIOR
1,067 Sq Ft
325 Sq M

EXTERIOR
230 Sq Ft
70 Sq M



INTRACOASTAL VIEW



OCEAN VIEW





ETURNA

BEACH VILLAS & RESIDENCES

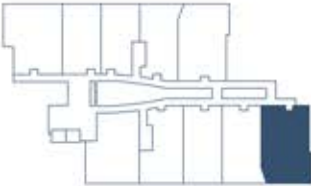
3319 North Ocean Drive
Hollywood, Florida 33019

504

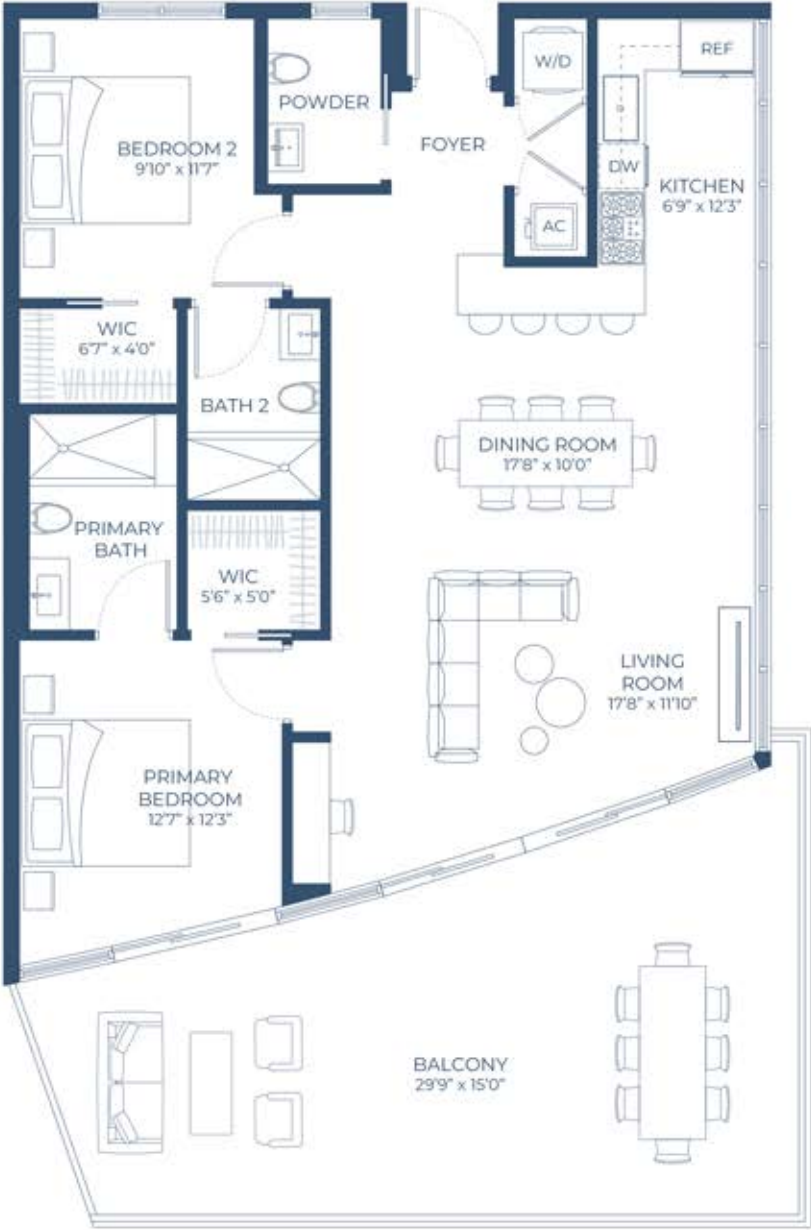
2 Bedroom
2.5 Bathroom

INTERIOR
1,154 Sq Ft
352 Sq M

EXTERIOR
464 Sq Ft
141 Sq M



INTRACOASTAL VIEW



OCEAN VIEW



Stated dimensions are measured to the exterior boundaries of the exterior walls and the centerline of interior demising walls and in fact vary from the dimensions that would be determined by using the description and definition of the "Unit" set forth in the Declaration (which generally only includes the interior airspace between the perimeter walls and excludes interior structural components). For your reference, the area of the Unit, determined in accordance with those defined unit boundaries, is 2,543 square footage. Note that measurements of rooms set forth on this floor plan are generally taken at the greatest points of each given room (as if the room were a perfect rectangle), without regard for any cutouts. Accordingly, the area of the actual room will typically be smaller than the product obtained by multiplying the stated length times width. All dimensions are approximate and may vary with actual construction, and all floor plans and development plans are subject to change.



ETURNA

BEACH VILLAS & RESIDENCES

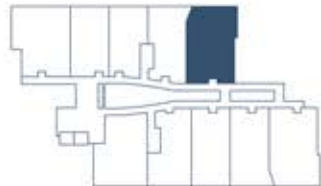
3319 North Ocean Drive
Hollywood, Florida 33019

505

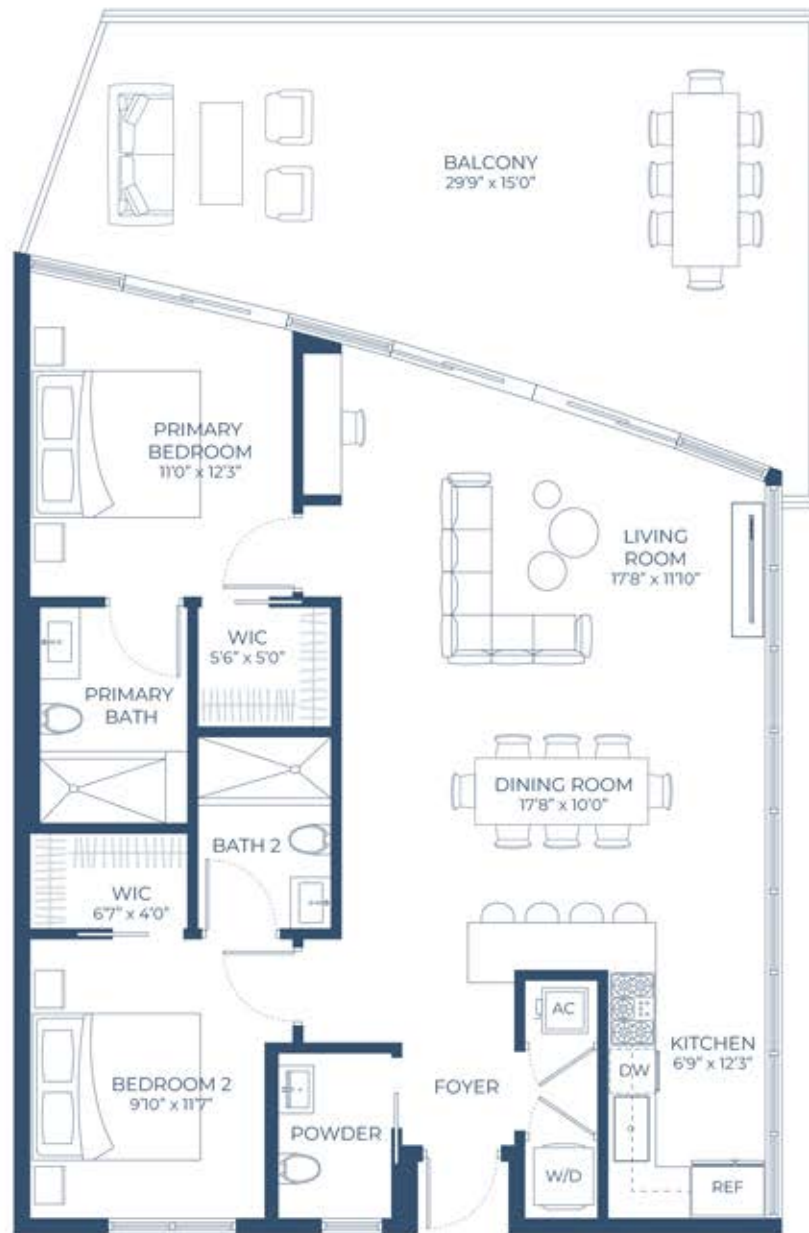
2 Bedroom
2.5 Bathroom

INTERIOR
1,154 Sq Ft
352 Sq M

EXTERIOR
464 Sq Ft
141 Sq M



INTRACOASTAL VIEW



OCEAN VIEW



© Stated dimensions are measured to the exterior boundaries of the exterior walls and the centerline of interior demising walls and in fact vary from the dimensions that would be determined by using the description and definition of the "Unit" set forth in the Declaration (which generally only includes the interior airspace between the perimeter walls and excludes interior structural components). For your reference, the area of the Unit, determined in accordance with those defined unit boundaries, is 2,543 square footage. Note that measurements of rooms set forth on this floor plan are generally taken at the greatest points of each given room (as if the room were a perfect rectangle), without regard for any cutouts. Accordingly, the area of the actual room will typically be smaller than the product obtained by multiplying the stated length times width. All dimensions are approximate and may vary with actual construction, and all floor plans and development plans are subject to change.



ETURNA

BEACH VILLAS & RESIDENCES

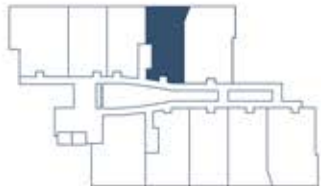
3319 North Ocean Drive
Hollywood, Florida 33019

506

1 Bedroom
1.5 Bathroom

INTERIOR
965 Sq Ft
294 Sq M

EXTERIOR
230 Sq Ft
70 Sq M



INTRACOASTAL VIEW



OCEAN VIEW



© Stated dimensions are measured to the exterior boundaries of the exterior walls and the centerline of interior demising walls and in fact vary from the dimensions that would be determined by using the description and definition of the "Unit" set forth in the Declaration (which generally only includes the interior airspace between the perimeter walls and excludes interior structural components). For your reference, the area of the Unit, determined in accordance with those defined unit boundaries, is 2,543 square footage. Note that measurements of rooms set forth on this floor plan are generally taken at the greatest points of each given room (as if the room were a perfect rectangle), without regard for any cutouts. Accordingly, the area of the actual room will typically be smaller than the product obtained by multiplying the stated length times width. All dimensions are approximate and may vary with actual construction, and all floor plans and development plans are subject to change.



ETURNA

BEACH VILLAS & RESIDENCES

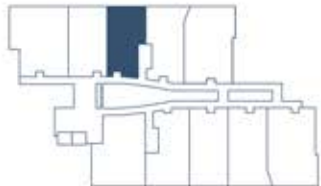
3319 North Ocean Drive
Hollywood, Florida 33019

507

1 Bedroom
1.5 Bathroom

INTERIOR
883 Sq Ft
269 Sq M

EXTERIOR
178 Sq Ft
54 Sq M



INTRACOASTAL VIEW



OCEAN VIEW



© Stated dimensions are measured to the exterior boundaries of the exterior walls and the centerline of interior demising walls and in fact vary from the dimensions that would be determined by using the description and definition of the "Unit" set forth in the Declaration (which generally only includes the interior airspace between the perimeter walls and excludes interior structural components). For your reference, the area of the Unit, determined in accordance with those defined unit boundaries, is 2,543 square footage. Note that measurements of rooms set forth on this floor plan are generally taken at the greatest points of each given room (as if the room were a perfect rectangle), without regard for any cutouts. Accordingly, the area of the actual room will typically be smaller than the product obtained by multiplying the stated length times width. All dimensions are approximate and may vary with actual construction, and all floor plans and development plans are subject to change.



ETURNA

BEACH VILLAS & RESIDENCES

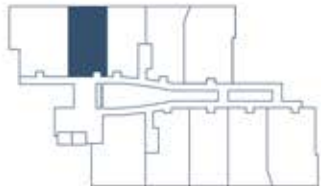
3319 North Ocean Drive
Hollywood, Florida 33019

508

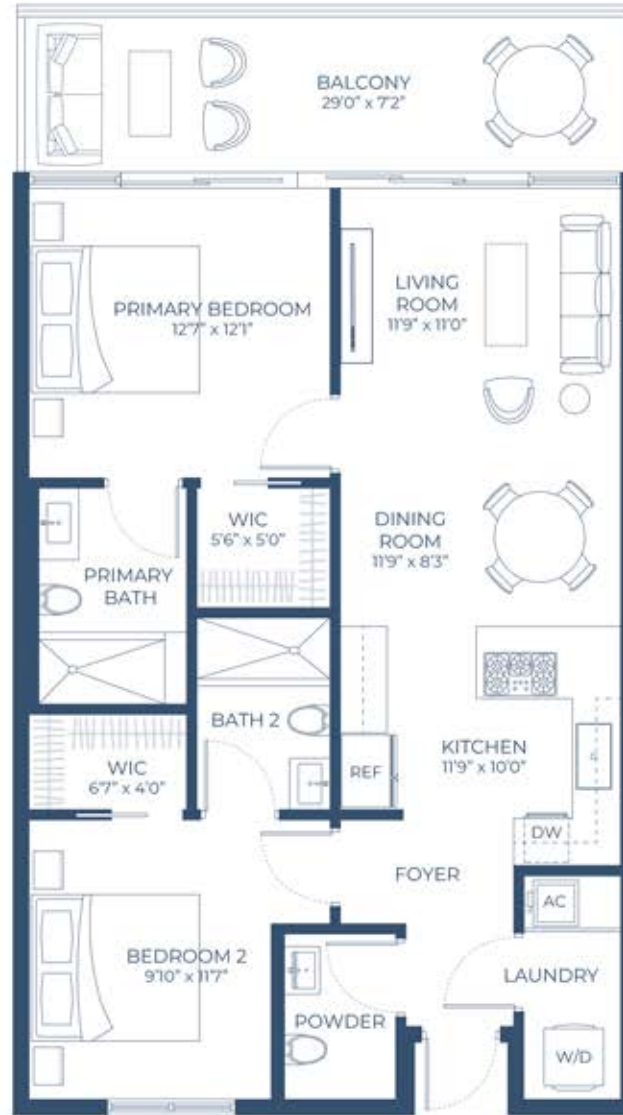
2 Bedroom
2.5 Bathroom

INTERIOR
983 Sq Ft
300 Sq M

EXTERIOR
178 Sq Ft
54 Sq M



INTRACOASTAL VIEW



OCEAN VIEW



© Stated dimensions are measured to the exterior boundaries of the exterior walls and the centerline of interior demising walls and in fact vary from the dimensions that would be determined by using the description and definition of the "Unit" set forth in the Declaration (which generally only includes the interior airspace between the perimeter walls and excludes interior structural components). For your reference, the area of the Unit, determined in accordance with those defined unit boundaries, is 2,543 square footage. Note that measurements of rooms set forth on this floor plan are generally taken at the greatest points of each given room (as if the room were a perfect rectangle), without regard for any cutouts. Accordingly, the area of the actual room will typically be smaller than the product obtained by multiplying the stated length times width. All dimensions are approximate and may vary with actual construction, and all floor plans and development plans are subject to change.



ETURNA

BEACH VILLAS & RESIDENCES

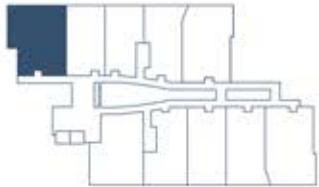
3319 North Ocean Drive
Hollywood, Florida 33019

509

2 Bedroom
2.5 Bathroom

INTERIOR
1232 Sq Ft
376 Sq M

EXTERIOR
420 Sq Ft
128 Sq M



INTRACOASTAL VIEW



OCEAN VIEW



© Stated dimensions are measured to the exterior boundaries of the exterior walls and the centerline of interior demising walls and in fact vary from the dimensions that would be determined by using the description and definition of the "Unit" set forth in the Declaration (which generally only includes the interior airspace between the perimeter walls and excludes interior structural components). For your reference, the area of the Unit, determined in accordance with those defined unit boundaries, is 2,543 square footage. Note that measurements of rooms set forth on this floor plan are generally taken at the greatest points of each given room (as if the room were a perfect rectangle), without regard for any cutouts. Accordingly, the area of the actual room will typically be smaller than the product obtained by multiplying the stated length times width. All dimensions are approximate and may vary with actual construction, and all floor plans and development plans are subject to change.



ETURNA

BEACH VILLAS & RESIDENCES

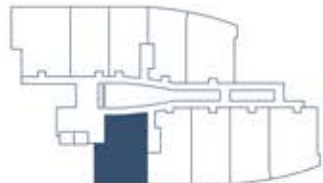
3319 North Ocean Drive
Hollywood, Florida 33019

601

2 Bedroom
2.5 Bathroom

INTERIOR
1094 Sq Ft
334 Sq M

EXTERIOR
328 Sq Ft
100 Sq M



INTRACOASTAL VIEW



OCEAN VIEW



© Stated dimensions are measured to the exterior boundaries of the exterior walls and the centerline of interior demising walls and in fact vary from the dimensions that would be determined by using the description and definition of the "Unit" set forth in the Declaration (which generally only includes the interior airspace between the perimeter walls and excludes interior structural components). For your reference, the area of the Unit, determined in accordance with those defined unit boundaries, is 2,543 square footage. Note that measurements of rooms set forth on this floor plan are generally taken at the greatest points of each given room (as if the room were a perfect rectangle), without regard for any cutouts. Accordingly, the area of the actual room will typically be smaller than the product obtained by multiplying the stated length times width. All dimensions are approximate and may vary with actual construction, and all floor plans and development plans are subject to change.



ETURNA

BEACH VILLAS & RESIDENCES

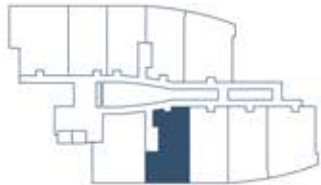
3319 North Ocean Drive
Hollywood, Florida 33019

602

1 Bedroom
1.5 Bathroom

INTERIOR
1033 Sq Ft
315 Sq M

EXTERIOR
173 Sq Ft
53 Sq M



INTRACOASTAL VIEW



OCEAN VIEW



© Stated dimensions are measured to the exterior boundaries of the exterior walls and the centerline of interior demising walls and in fact vary from the dimensions that would be determined by using the description and definition of the "Unit" set forth in the Declaration (which generally only includes the interior airspace between the perimeter walls and excludes interior structural components). For your reference, the area of the Unit, determined in accordance with those defined unit boundaries, is 2,543 square footage. Note that measurements of rooms set forth on this floor plan are generally taken at the greatest points of each given room (as if the room were a perfect rectangle), without regard for any cutouts. Accordingly, the area of the actual room will typically be smaller than the product obtained by multiplying the stated length times width. All dimensions are approximate and may vary with actual construction, and all floor plans and development plans are subject to change.



ETURNA

BEACH VILLAS & RESIDENCES

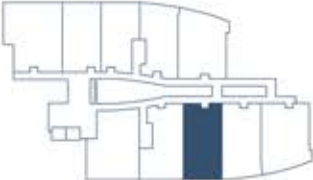
3319 North Ocean Drive
Hollywood, Florida 33019

603

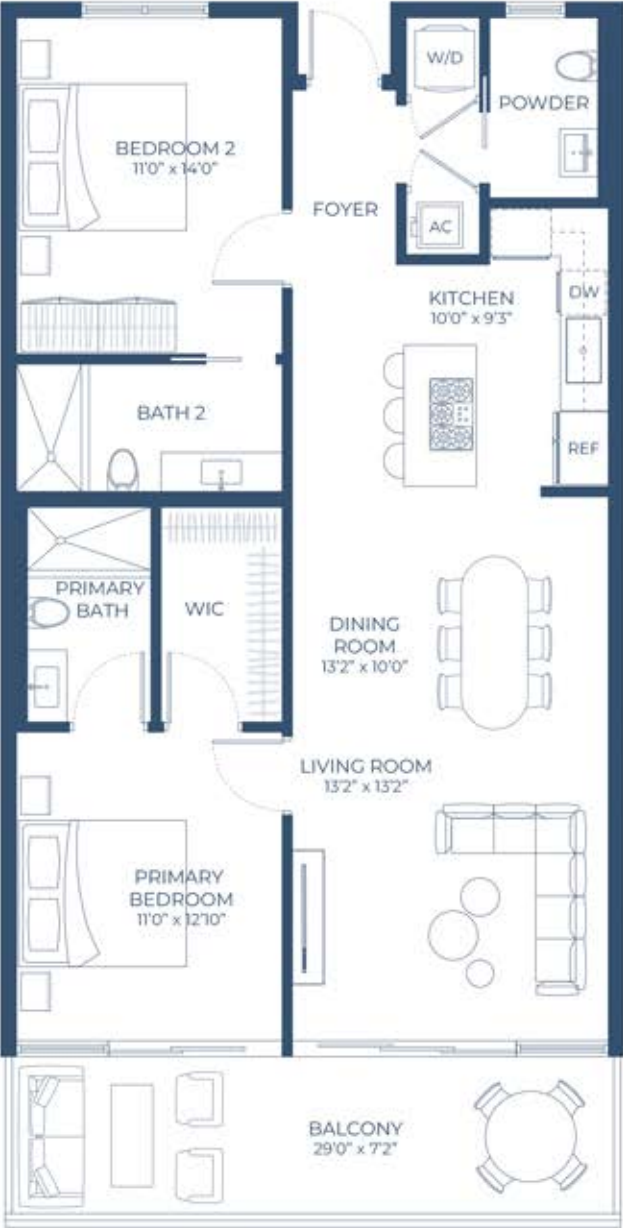
2 Bedroom
2.5 Bathroom

INTERIOR
1102 Sq Ft
336 Sq M

EXTERIOR
153 Sq Ft
47 Sq M



INTRACOASTAL VIEW



OCEAN VIEW



Stated dimensions are measured to the exterior boundaries of the exterior walls and the centerline of interior demising walls and in fact vary from the dimensions that would be determined by using the description and definition of the "Unit" set forth in the Declaration (which generally only includes the interior airspace between the perimeter walls and excludes interior structural components). For your reference, the area of the Unit, determined in accordance with those defined unit boundaries, is 2,543 square footage. Note that measurements of rooms set forth on this floor plan are generally taken at the greatest points of each given room (as if the room were a perfect rectangle), without regard for any cutouts. Accordingly, the area of the actual room will typically be smaller than the product obtained by multiplying the stated length times width. All dimensions are approximate and may vary with actual construction, and all floor plans and development plans are subject to change.



ETURNA

BEACH VILLAS & RESIDENCES

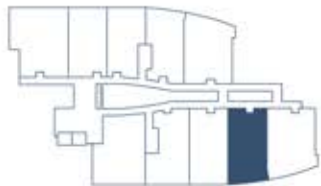
3319 North Ocean Drive
Hollywood, Florida 33019

604

2 Bedroom
2.5 Bathroom

INTERIOR
1067 Sq Ft
325 Sq M

EXTERIOR
157 Sq Ft
48 Sq M



INTRACOASTAL VIEW



OCEAN VIEW



© Stated dimensions are measured to the exterior boundaries of the exterior walls and the centerline of interior demising walls and in fact vary from the dimensions that would be determined by using the description and definition of the "Unit" set forth in the Declaration (which generally only includes the interior airspace between the perimeter walls and excludes interior structural components). For your reference, the area of the Unit, determined in accordance with those defined unit boundaries, is 2,543 square footage. Note that measurements of rooms set forth on this floor plan are generally taken at the greatest points of each given room (as if the room were a perfect rectangle), without regard for any cutouts. Accordingly, the area of the actual room will typically be smaller than the product obtained by multiplying the stated length times width. All dimensions are approximate and may vary with actual construction, and all floor plans and development plans are subject to change.



ETURNA

BEACH VILLAS & RESIDENCES

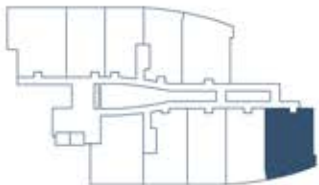
3319 North Ocean Drive
Hollywood, Florida 33019

605

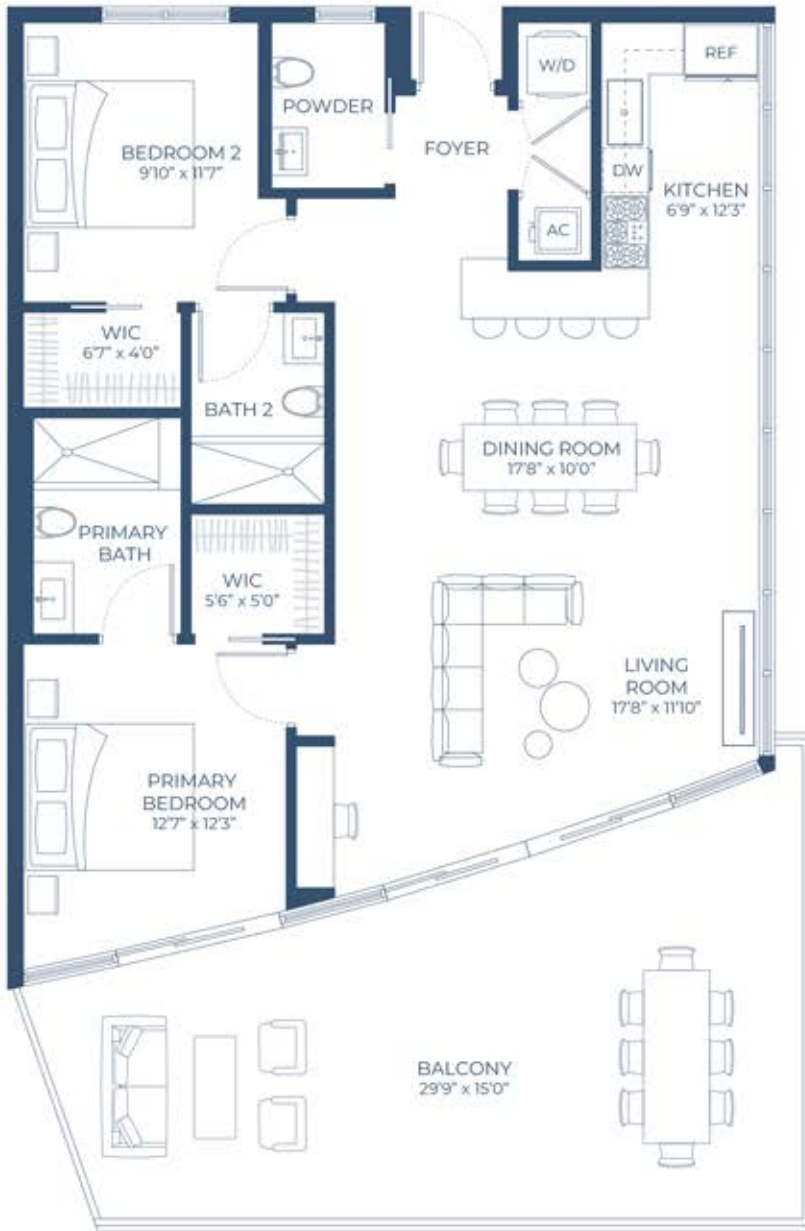
2 Bedroom
2.5 Bathroom

INTERIOR
1154 Sq Ft
352 Sq M

EXTERIOR
417 Sq Ft
127 Sq M



INTRACOASTAL VIEW



OCEAN VIEW



Stated dimensions are measured to the exterior boundaries of the exterior walls and the centerline of interior demising walls and in fact vary from the dimensions that would be determined by using the description and definition of the "Unit" set forth in the Declaration (which generally only includes the interior airspace between the perimeter walls and excludes interior structural components). For your reference, the area of the Unit, determined in accordance with those defined unit boundaries, is 2,543 square footage. Note that measurements of rooms set forth on this floor plan are generally taken at the greatest points of each given room (as if the room were a perfect rectangle), without regard for any cutouts. Accordingly, the area of the actual room will typically be smaller than the product obtained by multiplying the stated length times width. All dimensions are approximate and may vary with actual construction, and all floor plans and development plans are subject to change.



ETURNA

BEACH VILLAS & RESIDENCES

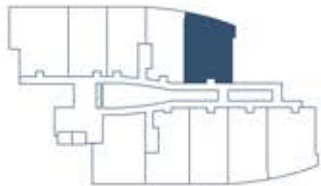
3319 North Ocean Drive
Hollywood, Florida 33019

606

2 Bedroom
2.5 Bathroom

INTERIOR
1154 Sq Ft
352 Sq M

EXTERIOR
414 Sq Ft
126 Sq M



INTRACOASTAL VIEW



OCEAN VIEW



© Stated dimensions are measured to the exterior boundaries of the exterior walls and the centerline of interior demising walls and in fact vary from the dimensions that would be determined by using the description and definition of the "Unit" set forth in the Declaration (which generally only includes the interior airspace between the perimeter walls and excludes interior structural components). For your reference, the area of the Unit, determined in accordance with those defined unit boundaries, is 2,543 square footage. Note that measurements of rooms set forth on this floor plan are generally taken at the greatest points of each given room (as if the room were a perfect rectangle), without regard for any cutouts. Accordingly, the area of the actual room will typically be smaller than the product obtained by multiplying the stated length times width. All dimensions are approximate and may vary with actual construction, and all floor plans and development plans are subject to change.



ETURNA

BEACH VILLAS & RESIDENCES

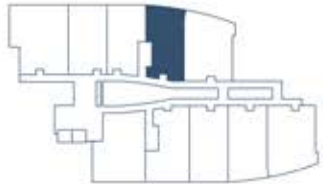
3319 North Ocean Drive
Hollywood, Florida 33019

607

1 Bedroom
1.5 Bathroom

INTERIOR
965 Sq Ft
294 Sq M

EXTERIOR
158 Sq Ft
48 Sq M



INTRACOASTAL VIEW



OCEAN VIEW



© Stated dimensions are measured to the exterior boundaries of the exterior walls and the centerline of interior demising walls and in fact vary from the dimensions that would be determined by using the description and definition of the "Unit" set forth in the Declaration (which generally only includes the interior airspace between the perimeter walls and excludes interior structural components). For your reference, the area of the Unit, determined in accordance with those defined unit boundaries, is 2,543 square footage. Note that measurements of rooms set forth on this floor plan are generally taken at the greatest points of each given room (as if the room were a perfect rectangle), without regard for any cutouts. Accordingly, the area of the actual room will typically be smaller than the product obtained by multiplying the stated length times width. All dimensions are approximate and may vary with actual construction, and all floor plans and development plans are subject to change.



ETURNA

BEACH VILLAS & RESIDENCES

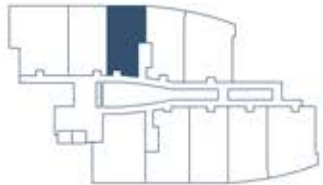
3319 North Ocean Drive
Hollywood, Florida 33019

608

1 Bedroom
1.5 Bathroom

INTERIOR
883 Sq Ft
269 Sq M

EXTERIOR
152 Sq Ft
46 Sq M



INTRACOASTAL VIEW



OCEAN VIEW



© Stated dimensions are measured to the exterior boundaries of the exterior walls and the centerline of interior demising walls and in fact vary from the dimensions that would be determined by using the description and definition of the "Unit" set forth in the Declaration (which generally only includes the interior airspace between the perimeter walls and excludes interior structural components). For your reference, the area of the Unit, determined in accordance with those defined unit boundaries, is 2,543 square footage. Note that measurements of rooms set forth on this floor plan are generally taken at the greatest points of each given room (as if the room were a perfect rectangle), without regard for any cutouts. Accordingly, the area of the actual room will typically be smaller than the product obtained by multiplying the stated length times width. All dimensions are approximate and may vary with actual construction, and all floor plans and development plans are subject to change.



ETURNA

BEACH VILLAS & RESIDENCES

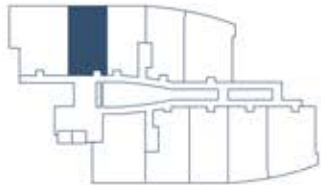
3319 North Ocean Drive
Hollywood, Florida 33019

609

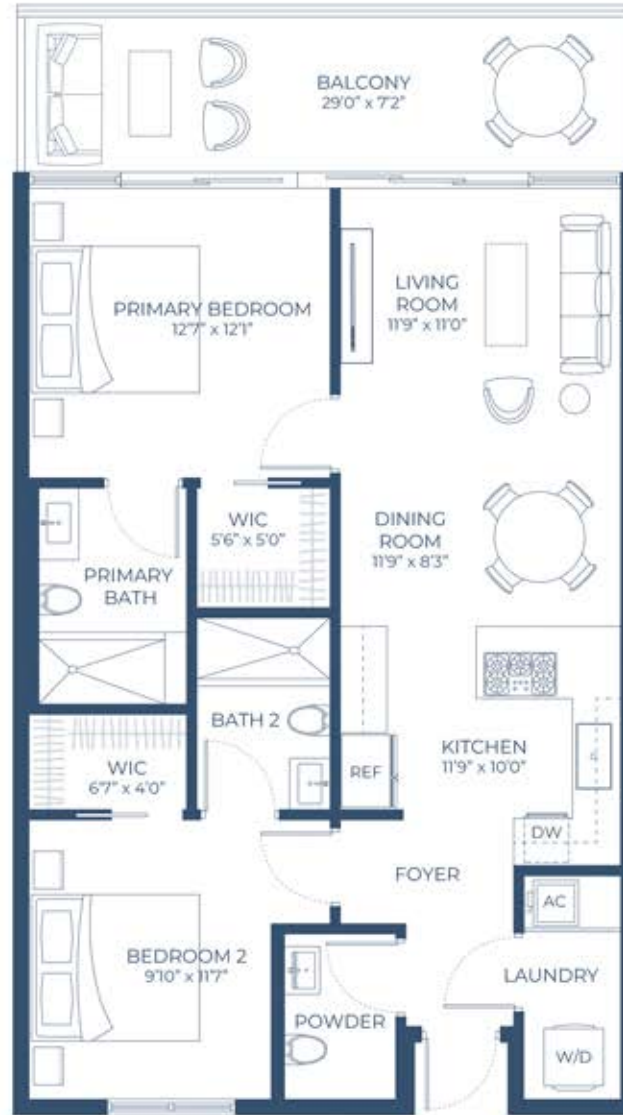
2 Bedroom
2.5 Bathroom

INTERIOR
983 Sq Ft
300 Sq M

EXTERIOR
152 Sq Ft
46 Sq M



INTRACOASTAL VIEW



OCEAN VIEW



© Stated dimensions are measured to the exterior boundaries of the exterior walls and the centerline of interior demising walls and in fact vary from the dimensions that would be determined by using the description and definition of the "Unit" set forth in the Declaration (which generally only includes the interior airspace between the perimeter walls and excludes interior structural components). For your reference, the area of the Unit, determined in accordance with those defined unit boundaries, is 2,543 square footage. Note that measurements of rooms set forth on this floor plan are generally taken at the greatest points of each given room (as if the room were a perfect rectangle), without regard for any cutouts. Accordingly, the area of the actual room will typically be smaller than the product obtained by multiplying the stated length times width. All dimensions are approximate and may vary with actual construction, and all floor plans and development plans are subject to change.



ETURNA

BEACH VILLAS & RESIDENCES

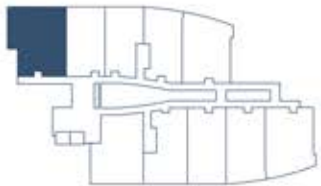
3319 North Ocean Drive
Hollywood, Florida 33019

610

2 Bedroom
2.5 Bathroom

INTERIOR
1252 Sq Ft
382 Sq M

EXTERIOR
354 Sq Ft
108 Sq M



INTRACOASTAL VIEW



OCEAN VIEW



© Stated dimensions are measured to the exterior boundaries of the exterior walls and the centerline of interior demising walls and in fact vary from the dimensions that would be determined by using the description and definition of the "Unit" set forth in the Declaration (which generally only includes the interior airspace between the perimeter walls and excludes interior structural components). For your reference, the area of the Unit, determined in accordance with those defined unit boundaries, is 2,543 square footage. Note that measurements of rooms set forth on this floor plan are generally taken at the greatest points of each given room (as if the room were a perfect rectangle), without regard for any cutouts. Accordingly, the area of the actual room will typically be smaller than the product obtained by multiplying the stated length times width. All dimensions are approximate and may vary with actual construction, and all floor plans and development plans are subject to change.



ETURNA

BEACH VILLAS & RESIDENCES

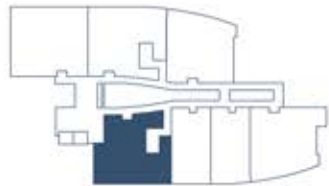
3319 North Ocean Drive
Hollywood, Florida 33019

701

3 Bedroom
3.5 Bathroom

INTERIOR
1527 Sq Ft
465 Sq M

EXTERIOR
425 Sq Ft
130 Sq M



INTRACOASTAL VIEW



OCEAN VIEW



© Stated dimensions are measured to the exterior boundaries of the exterior walls and the centerline of interior demising walls and in fact vary from the dimensions that would be determined by using the description and definition of the "Unit" set forth in the Declaration (which generally only includes the interior airspace between the perimeter walls and excludes interior structural components). For your reference, the area of the Unit, determined in accordance with those defined unit boundaries, is 2,543 square footage. Note that measurements of rooms set forth on this floor plan are generally taken at the greatest points of each given room (as if the room were a perfect rectangle), without regard for any cutouts. Accordingly, the area of the actual room will typically be smaller than the product obtained by multiplying the stated length times width. All dimensions are approximate and may vary with actual construction, and all floor plans and development plans are subject to change.



ETURNA

BEACH VILLAS & RESIDENCES

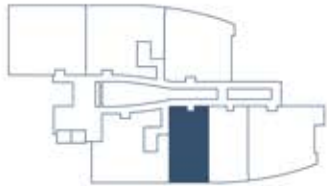
3319 North Ocean Drive
Hollywood, Florida 33019

702

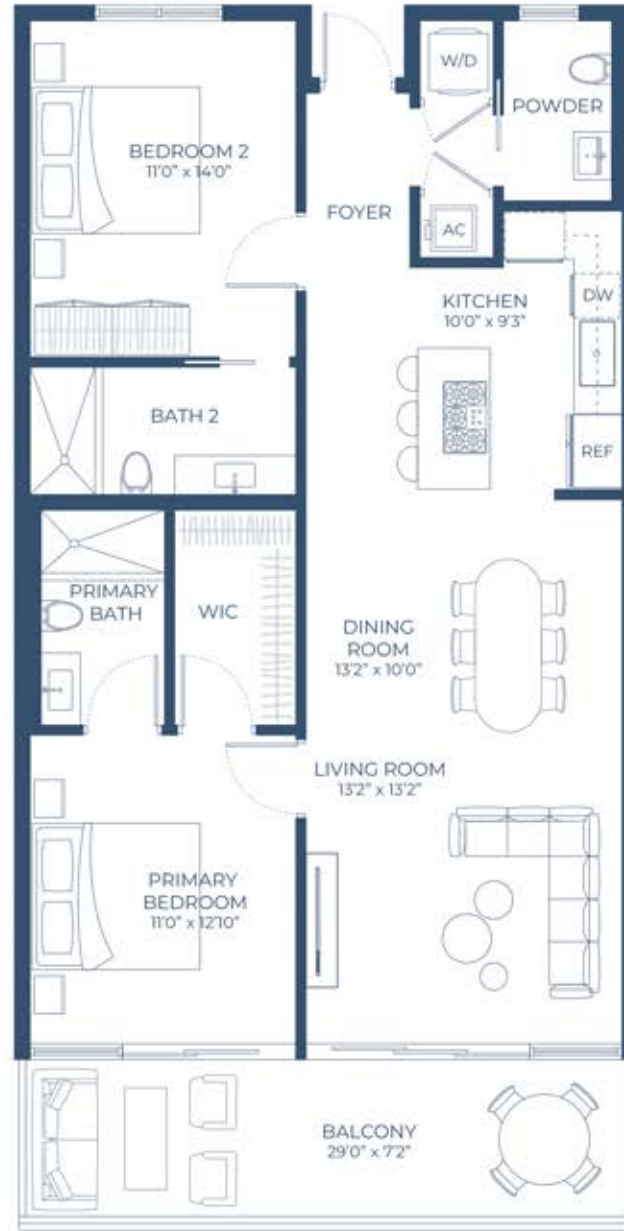
2 Bedroom
2.5 Bathroom

INTERIOR
1110 Sq Ft
338 Sq M

EXTERIOR
152 Sq Ft
46 Sq M



INTRACOASTAL VIEW



OCEAN VIEW



© Stated dimensions are measured to the exterior boundaries of the exterior walls and the centerline of interior demising walls and in fact vary from the dimensions that would be determined by using the description and definition of the "Unit" set forth in the Declaration (which generally only includes the interior airspace between the perimeter walls and excludes interior structural components). For your reference, the area of the Unit, determined in accordance with those defined unit boundaries, is 2,543 square footage. Note that measurements of rooms set forth on this floor plan are generally taken at the greatest points of each given room (as if the room were a perfect rectangle), without regard for any cutouts. Accordingly, the area of the actual room will typically be smaller than the product obtained by multiplying the stated length times width. All dimensions are approximate and may vary with actual construction, and all floor plans and development plans are subject to change.



ETURNA

BEACH VILLAS & RESIDENCES

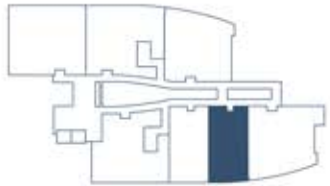
3319 North Ocean Drive
Hollywood, Florida 33019

703

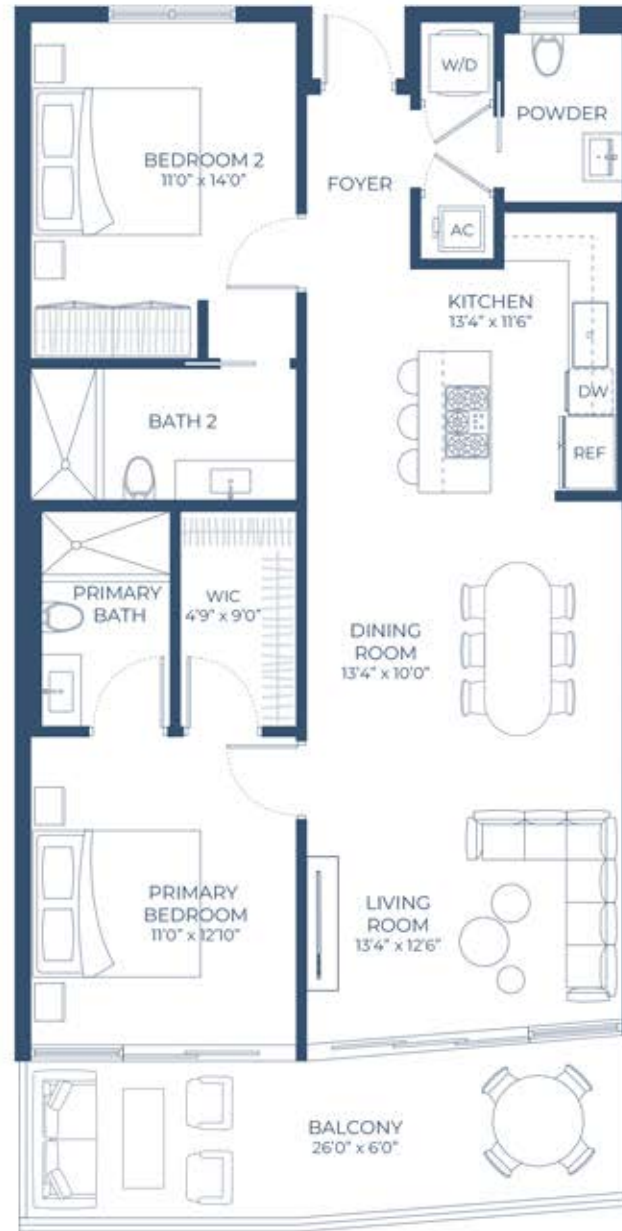
2 Bedroom
2.5 Bathroom

INTERIOR
1092 Sq Ft
333 Sq M

EXTERIOR
156 Sq Ft
48 Sq M



INTRACOASTAL VIEW



OCEAN VIEW



© Stated dimensions are measured to the exterior boundaries of the exterior walls and the centerline of interior demising walls and in fact vary from the dimensions that would be determined by using the description and definition of the "Unit" set forth in the Declaration (which generally only includes the interior airspace between the perimeter walls and excludes interior structural components). For your reference, the area of the Unit, determined in accordance with those defined unit boundaries, is 2,543 square footage. Note that measurements of rooms set forth on this floor plan are generally taken at the greatest points of each given room (as if the room were a perfect rectangle), without regard for any cutouts. Accordingly, the area of the actual room will typically be smaller than the product obtained by multiplying the stated length times width. All dimensions are approximate and may vary with actual construction, and all floor plans and development plans are subject to change.



ETURNA

BEACH VILLAS & RESIDENCES

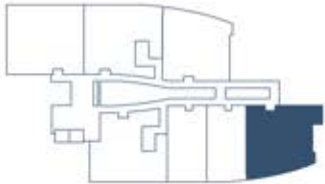
3319 North Ocean Drive
Hollywood, Florida 33019

704

3 Bedroom
3.5 Bathroom

INTERIOR
1684 Sq Ft
513 Sq M

EXTERIOR
496 Sq Ft
152 Sq M



INTRACOASTAL VIEW



OCEAN VIEW



© Stated dimensions are measured to the exterior boundaries of the exterior walls and the centerline of interior demising walls and in fact vary from the dimensions that would be determined by using the description and definition of the "Unit" set forth in the Declaration (which generally only includes the interior airspace between the perimeter walls and excludes interior structural components). For your reference, the area of the Unit, determined in accordance with those defined unit boundaries, is 2,543 square footage. Note that measurements of rooms set forth on this floor plan are generally taken at the greatest points of each given room (as if the room were a perfect rectangle), without regard for any cutouts. Accordingly, the area of the actual room will typically be smaller than the product obtained by multiplying the stated length times width. All dimensions are approximate and may vary with actual construction, and all floor plans and development plans are subject to change.



ETURNA

BEACH VILLAS & RESIDENCES

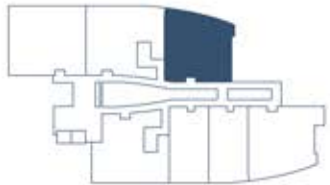
3319 North Ocean Drive
Hollywood, Florida 33019

705

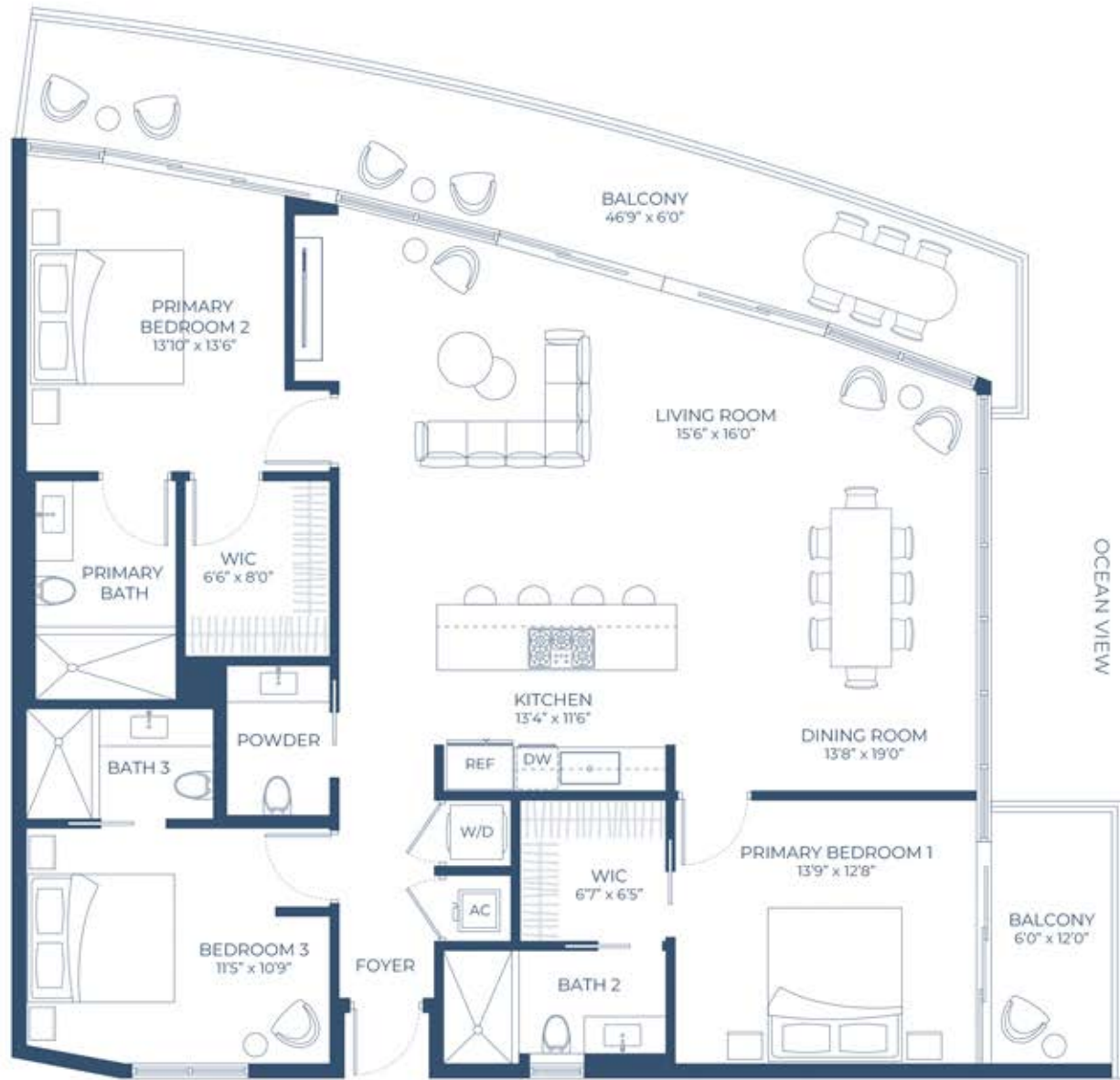
3 Bedroom
3.5 Bathroom

INTERIOR
1676 Sq Ft
511 Sq M

EXTERIOR
493 Sq Ft
150 Sq M



INTRACOASTAL VIEW



© Stated dimensions are measured to the exterior boundaries of the exterior walls and the centerline of interior demising walls and in fact vary from the dimensions that would be determined by using the description and definition of the "Unit" set forth in the Declaration (which generally only includes the interior airspace between the perimeter walls and excludes interior structural components). For your reference, the area of the Unit, determined in accordance with those defined unit boundaries, is 2,543 square footage. Note that measurements of rooms set forth on this floor plan are generally taken at the greatest points of each given room (as if the room were a perfect rectangle), without regard for any cutouts. Accordingly, the area of the actual room will typically be smaller than the product obtained by multiplying the stated length times width. All dimensions are approximate and may vary with actual construction, and all floor plans and development plans are subject to change.



ETURNA

BEACH VILLAS & RESIDENCES

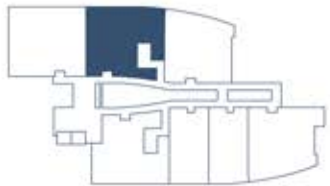
3319 North Ocean Drive
Hollywood, Florida 33019

706

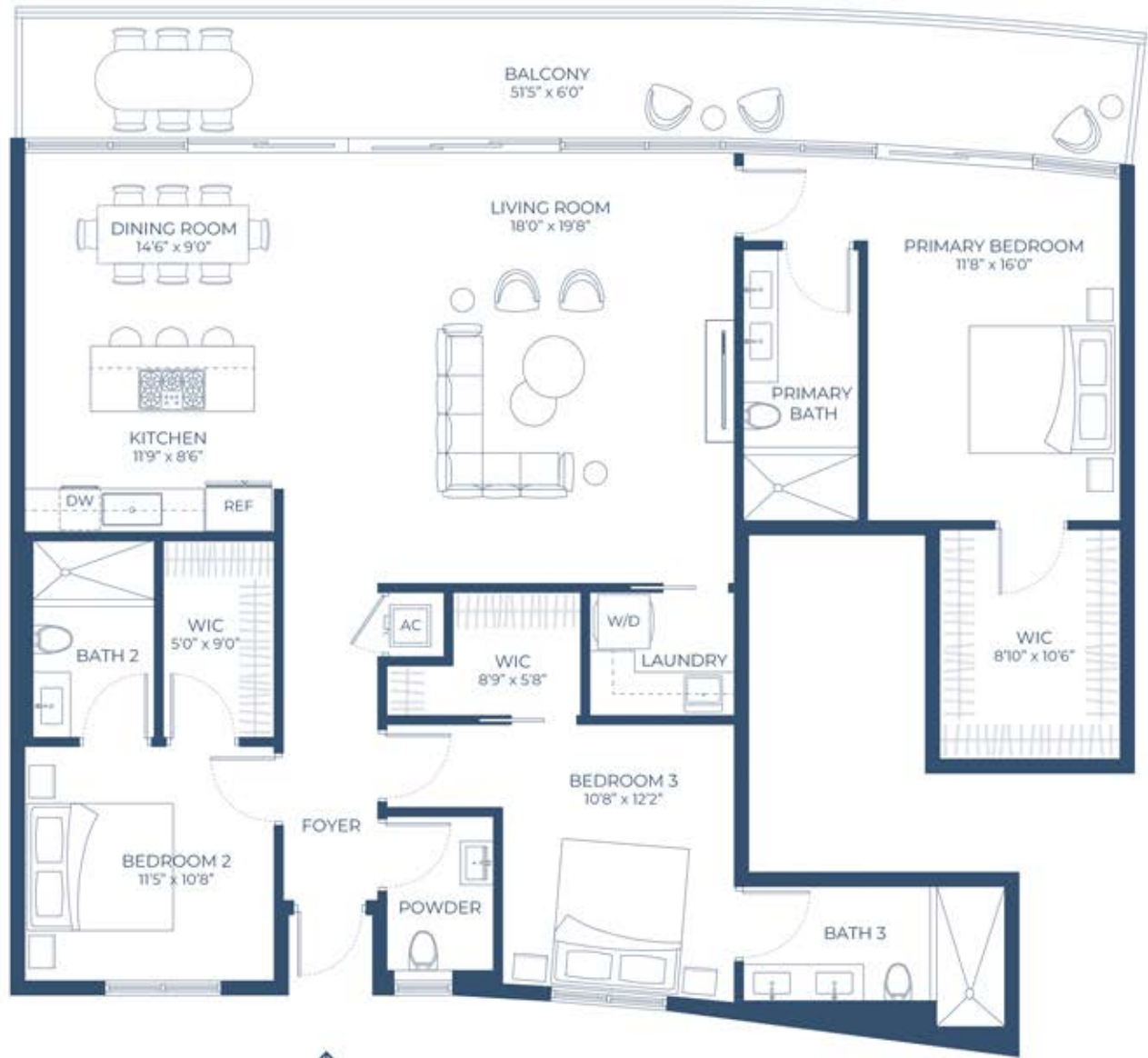
3 Bedroom
3.5 Bathroom

INTERIOR
1785 Sq Ft
544 Sq M

EXTERIOR
306 Sq Ft
93 Sq M



INTRACOASTAL VIEW



OCEAN VIEW



© Stated dimensions are measured to the exterior boundaries of the exterior walls and the centerline of interior demising walls and in fact vary from the dimensions that would be determined by using the description and definition of the "Unit" set forth in the Declaration (which generally only includes the interior airspace between the perimeter walls and excludes interior structural components). For your reference, the area of the Unit, determined in accordance with those defined unit boundaries, is 2,543 square footage. Note that measurements of rooms set forth on this floor plan are generally taken at the greatest points of each given room (as if the room were a perfect rectangle), without regard for any cutouts. Accordingly, the area of the actual room will typically be smaller than the product obtained by multiplying the stated length times width. All dimensions are approximate and may vary with actual construction, and all floor plans and development plans are subject to change.



ETURNA

BEACH VILLAS & RESIDENCES

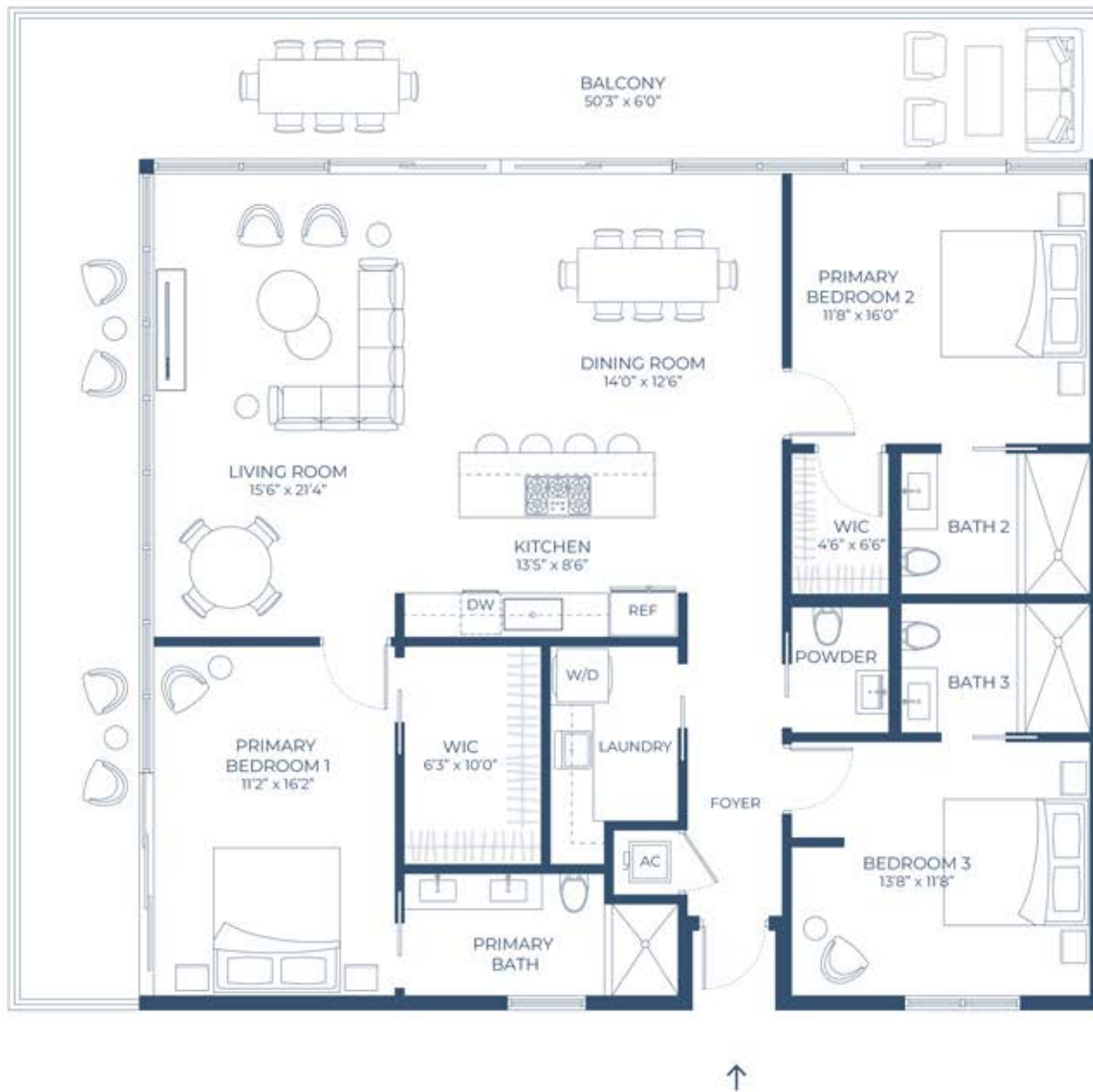
3319 North Ocean Drive
Hollywood, Florida 33019

707

3 Bedroom
3.5 Bathroom

INTERIOR
1727 Sq Ft
526 Sq M

EXTERIOR
538 Sq Ft
164 Sq M



© Stated dimensions are measured to the exterior boundaries of the exterior walls and the centerline of interior demising walls and in fact vary from the dimensions that would be determined by using the description and definition of the "Unit" set forth in the Declaration (which generally only includes the interior airspace between the perimeter walls and excludes interior structural components). For your reference, the area of the Unit, determined in accordance with those defined unit boundaries, is 2,543 square footage. Note that measurements of rooms set forth on this floor plan are generally taken at the greatest points of each given room (as if the room were a perfect rectangle), without regard for any cutouts. Accordingly, the area of the actual room will typically be smaller than the product obtained by multiplying the stated length times width. All dimensions are approximate and may vary with actual construction, and all floor plans and development plans are subject to change.